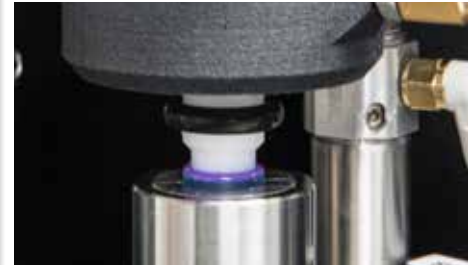




DAC
INTERNATIONAL

Your Lens Technology Partner



Blocking

Precision Blocking

IOL and CL Manufacturing



There is no one process that is the same as the next, but every lens should be handled with equal care and attention.

The DAC Precision Blocker is a 'no-compromise' solution to your lens process needs whether you are making high volume stock product or individual prescriptions.

Whether the lenses are Soft, GP, Scleral or even IOL, the DAC Precision Blocker is built to deliver

accurately and consistently on concentricity, tilt and squareness.

The high precision blocker was developed to maximize the full potential of the DAC lathe's edge contouring capability.

First or second side part handling is blocked with a high degree of accuracy and repeatability, with the minimum of time and operator attention. It offers universal blocking applications for a wide variety of lens types and processes.

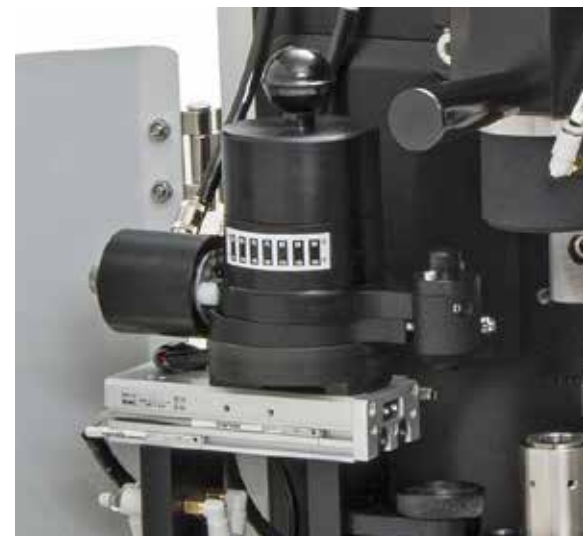
The DAC Precision Blocking System is designed with collets that have the same high accuracy as the DAC lathe collets.

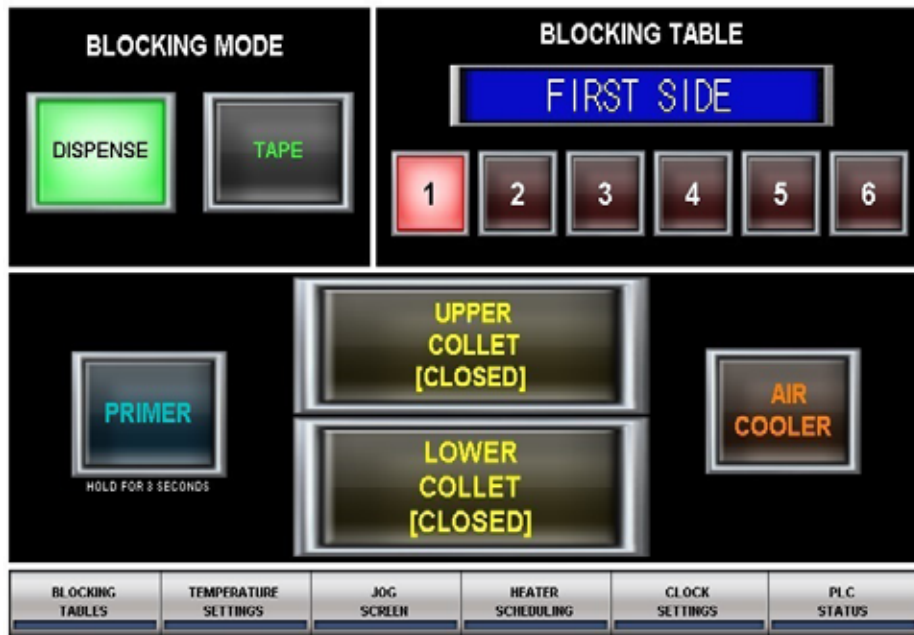
Easily inter-changeable wax pots give the opportunity to work with a variety of different waxes according to your needs and reduces down time for change-overs.

The on-board timer for the wax pot warm-up, using different time settings for each work day, allows you to start your work without any waiting time.

Benefits

- Fast, reliable calibration to increase production time
- Safe, consistent wax dosing
- Timer for wax pot warm-up to give you a fast start
- Quick and easy inter-changeable wax pots minimize downtime when switching between wax types
- LCD touch screen for intuitive operator interaction
- Strong, stable construction





An LCD touch screen provides an intuitive interface that allows the user to optimize variables to suit the individual process needs.

From the main menu all important parameters can be accessed to switch between different possibilities such as blocking with tape or wax, selecting different blocking tables or using the wax air cooler.

Each of the six blocking tables have independently configurable parameters.

Technical Data	
Wax temperature	programmable up to 130°C (266 F)
Control	Mitsubishi FX5 PLC
Collets	12.7 mm Dia X 13.0 mm Deep (0.5 in x 0.512 in) Upper and Lower, fitted as standard, Special sizes available upon request
Max distance between collet faces	76.2 mm (3.0 in)

Installation Requirements	
Electrical Power	100 - 240 VAC, single phase, 50/60 Hz, 8 A
Compressed Air	30 l/min@ 5 bar (1 SCFM @ 75 PSIG) Recommended air quality: Class 4 per ISO 8573-1:2010
Operating Temperature	Nominal range: 20 - 23°C (68 - 74°F) maintained at +/- 1°C (+/- 2°F)
Minimum counter space	381 mm X 489 mm x 507 mm (W x D x H) 15 in x 19.3 in x 20 in (W x D x H)
Minimum weight	Floor 73 kg 160 lb
	Shipping 114 kg 250 lb

Head Office

6390 Rose Lane, Carpinteria, CA 93013 USA
 Phone +1 805 684 8307 Fax +1 805 566 2196 dac-intl.com

DAC Sales

Chris Pantle +1 805 745 1610 cpantle@dac-intl.com
Kurtis Brown +1 805 745 1628 kbrown@dac-intl.com



Your Lens Technology Partner